



**LIGHTHOUSE**  
Consulting Services, LLC



*Bringing effective insight  
to your organization SM*


*Open Line*

**Guest,**

**Welcome to:**

**It's Time To Bring Laughter Back Into The Work Place!**

Presented by  
Lighthouse Consulting Services, LLC

To print program slides, click here: 



**Featured Guest:**  
Mikki Williams, CSP  
Professional Speaker

Phone: 312.664.8447  
Email: [mikki@mikkiwilliams.com](mailto:mikki@mikkiwilliams.com)  
Website: [www.mikkiwilliams.com](http://www.mikkiwilliams.com)

**Host:**  
Dana Borowka, MA  
CEO, Lighthouse Consulting Services, LLC  
**Author of *Cracking The Personality Code***

Phone: (310) 453-6556, ext. 403  
Email: [dana@lighthouseconsulting.com](mailto:dana@lighthouseconsulting.com)  
Book: [www.crackingthepersonalitycode.com](http://www.crackingthepersonalitycode.com)



© 2010 Lighthouse Consulting Services, LLC All Rights Reserved

3130 Wilshire Blvd. Suite 550  
Santa Monica, CA 90403  
T 310.453.6556  
F 310.828.6987

[reception@lighthouseconsulting.com](mailto:reception@lighthouseconsulting.com)

- In-depth Workstyle & Personality Assessments
- Interpersonal Coaching
- Workshops - Cracking The Personality Code
- Career Guidance



**MIKKI WILLIAMS**  
UNLTD.

It's Time to  
Bring Humor to  
the  
Workplace!

[www.mikkiwilliams.com](http://www.mikkiwilliams.com)

[mikki@mikkiwilliams.com](mailto:mikki@mikkiwilliams.com)

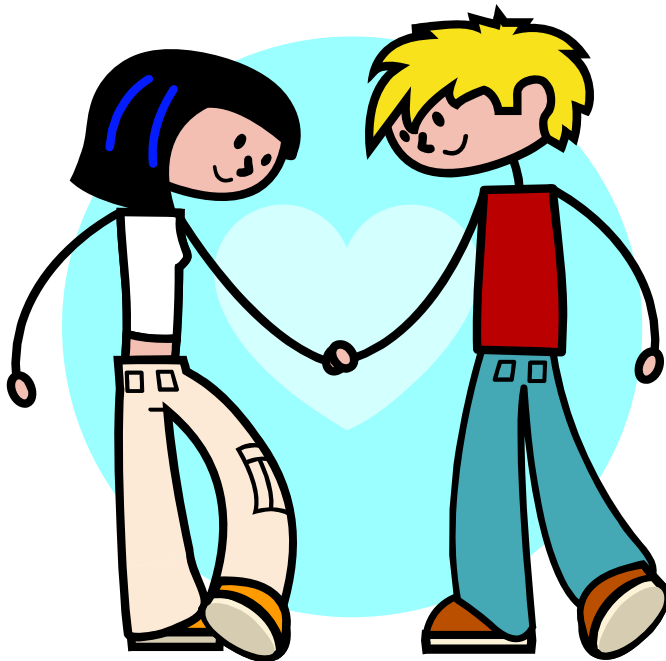
# Why we need humor in the workplace

- It boosts morale
- Encourages creativity and problem solving
- Reduces absenteeism
- Increases profits



# Why we need humor in the workplace (cont'd)

- Boosts people's ability to perform at peak level



- Increases interaction
- Increases employee retention

# Why we need humor in the workplace (cont'd)

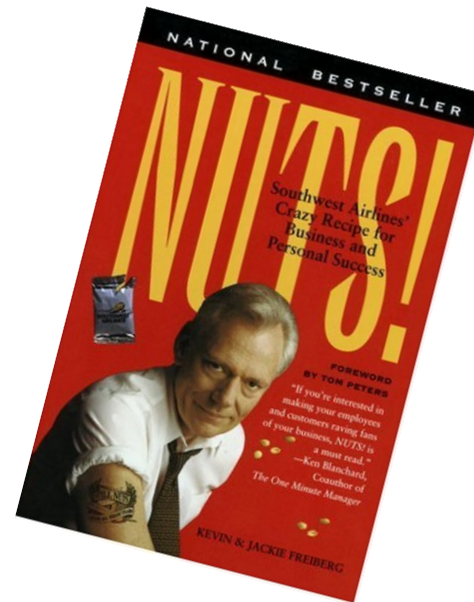
- Reduces stress
- Makes you feel good
- Inspires leadership



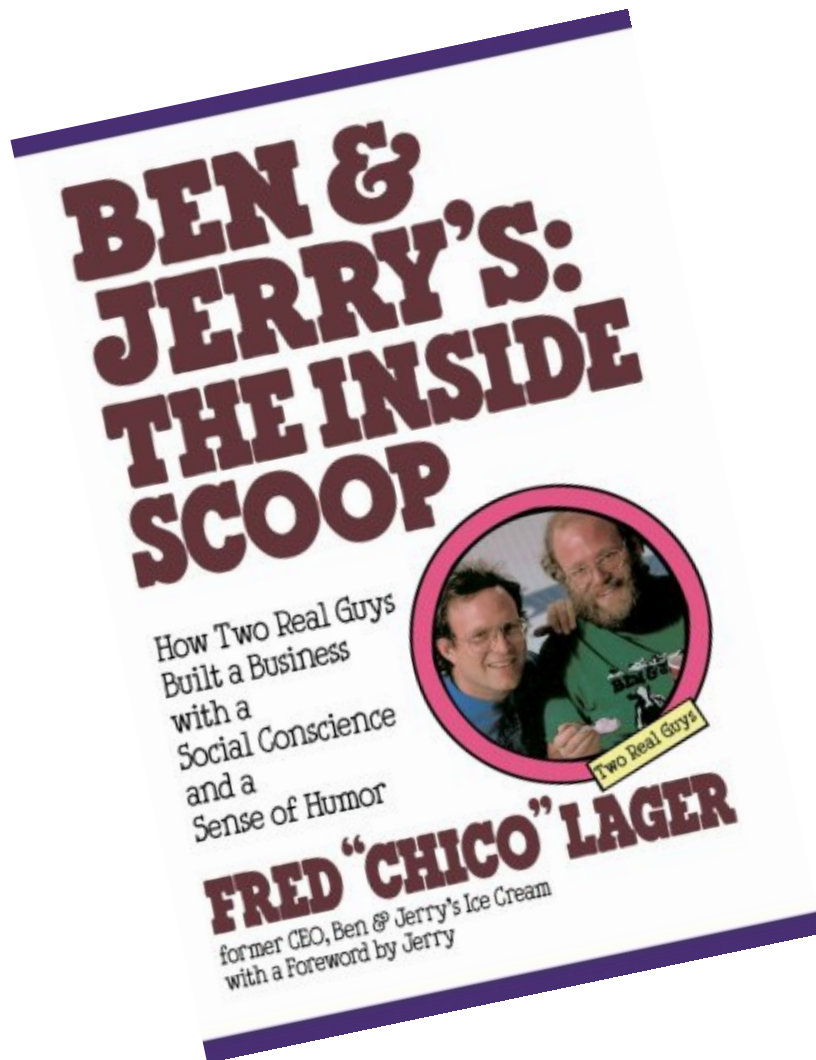


"What we are looking for, first and foremost, is a sense of humor . . . We hire attitudes."□

Herb Kelleher, CEO, Southwest Airlines







"It is the ability to take a joke, not make one, that proves you have a sense of humor."

Max Eastman

## 17 Ways to Create Humor in the Workplace

- Management has to support the concept
- Hire fun people
- Create a humor journal



© www.ClipProject.info



# 17 Ways to Create Humor in the Workplace (cont'd)



- Humor library
- Joke a day
- Provide challenging work

# 17 Ways to Create Humor in the Workplace (cont'd)

- Dress-for-fun days
- Awards
- CFO (Chief Fun Officer)



"Common sense and a sense of humor are the same thing, moving at different speeds. A sense of humor is just common sense, dancing."

William James

## 17 Ways to Create Humor in the Workplace (cont'd)



- Spontaneity
- Kid pictures of boss/employees
- Create skits

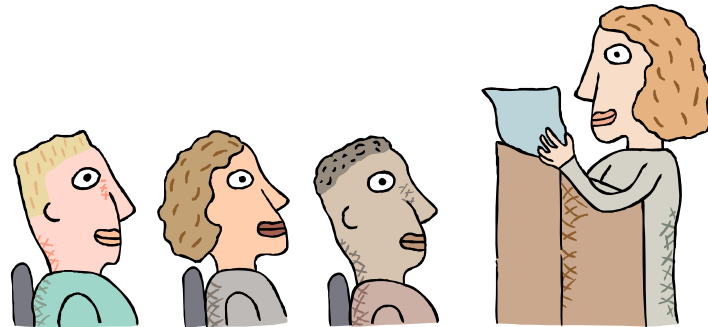
# 17 Ways to Create Humor in the Workplace (cont'd)



- Cartoon contests
- Company mascot
- Company humor motto

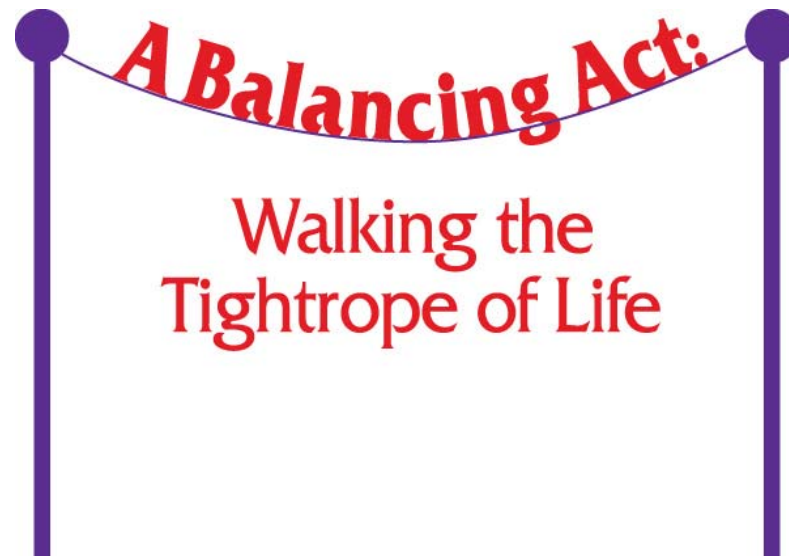
# 17 Ways to Create Humor in the Workplace (cont'd)

- Share funny stories at company meetings
- Humor blackboard



"A well-developed sense of humor is the pole that adds balance to your steps as you walk the tightrope of life."

William Arthur Ward







**LIGHTHOUSE**  
Consulting Services, LLC



*Bringing effective insight  
to your organization SM*

*Open Line*

**Thank you for attending our Open Line:  
*It's Time To Bring Laughter Back Into The Work Place!***

[Click here](#) to contact our Featured Guest directly

Click on [this link](#) to sign up for our upcoming Open Line:  
'10 Ways to Become a More Effective Manager Through  
Time Management'.

Presented by  
Lighthouse Consulting Services, LLC



**Featured Guest:**  
Mikki Williams, CSP  
Professional Speaker

Phone: 312.664.8447  
Email: [mikki@mikkiwilliams.com](mailto:mikki@mikkiwilliams.com)  
Website: [www.mikkiwilliams.com](http://www.mikkiwilliams.com)

**Host:**  
Dana Borowka, MA  
CEO, Lighthouse Consulting Services, LLC  
**Author of** [Cracking The Personality Code](#)

Phone: (310) 453-6556, ext. 403  
Email: [dana@lighthouseconsulting.com](mailto:dana@lighthouseconsulting.com)  
Book: [www.crackingthepersonalitycode.com](http://www.crackingthepersonalitycode.com)



© 2010 Lighthouse Consulting Services, LLC All Rights Reserved

3130 Wilshire Blvd. Suite 550  
Santa Monica, CA 90403  
T 310.453.6556  
F 310.828.6987

[reception@lighthouseconsulting.com](mailto:reception@lighthouseconsulting.com)

- In-depth Workstyle & Personality Assessments
- Interpersonal Coaching
- Workshops - Cracking The Personality Code
- Career Guidance

The Whole Life Trilogy  
from Mikki Williams, CSP:



E me: [mikki@mikkiwilliams.com](mailto:mikki@mikkiwilliams.com)  
[www.mikkiwilliams.com](http://www.mikkiwilliams.com)

Phone me: 312.664.8447  
312.664.8460

See me:

Fax me: